

# Stain Removal Chemistry Test Lab

## Staining of Fabrics

A. Each piece of fabric needs to be cut into a 2"x2" square. You will need one swatch or each desired stain. If testing water you may need two swatches. Keep track of your results by attaching your completed swatch to a piece of paper containing the following table.

- Lab Name/Partner \_\_\_\_\_
- Period # \_\_\_\_\_
- Test (each fabric will have a different test name)
- Example Chart Below.

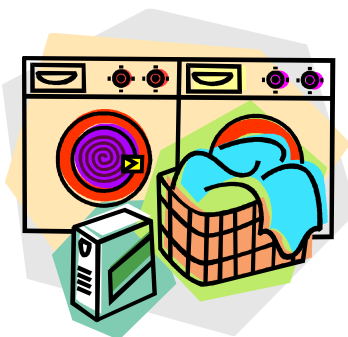
Lab ID	Period #	Test for this fabric
1	2	3
4	5	6

B. Before staining the fabric, you will need to put a piece of saran wrap underneath your piece of fabric. You are going to stain each piece of fabric with the items listed below. It is VERY important that you number each stain and that each stain stay in the same order listed below:

1. Mustard
2. Lipstick
3. Brown Marker
4. Ketchup
5. Finger Nail Polish
6. Grease
7. Coffee
8. Grass

C. Do NOT over stain the fabric - - - in other words, do NOT use too much of each item on the fabric. When you are finished, you will need to put another piece of saran wrap on top of the fabric. Finally place a heavy weight on the stained fabric for 5-10 minutes.

D. Allow stains to dry overnight.



## Washing of Fabrics

Listed below are the different types of test Products each lab will use in determining the best stain removal product. Make sure to use the correct water temperature listed and the desired directions from each product. No products will be placed in a washer or dryer, ALL hand washed.

**\* NOTE:** Follow the directions on the product for proper use on stain removal.

### 1. Stain Removing Agents:

- Borax
- Dish Detergent
- Oxygen Power Spray
- Shampoo
- Zout
- M30 Stain Remover
- Spot Shot
- Let fabrics air dry overnight.

### 2. Water Temperature:

- If water is required, wash one swatch in cold water and one in warm in a 1000 mL beaker half filled with water.

## Evaluate Fabrics

Lab ID \_\_\_\_\_ Period # \_\_\_\_\_ Test Performed: \_\_\_\_\_

Names of group members: \_\_\_\_\_

Write up the results for each stain listed below. Tell me if each stain came out completely, slightly, or not at all.

<b>Fabric #:</b>	<b>#1</b>	<b>#2</b>	<b>#3</b>
<b>Specific Test:</b>			
<b>1. Mustard</b>	Completely Slightly Not at All	Completely Slightly Not at All	Completely Slightly Not at All
<b>2. Lipstick</b>	Completely Slightly Not at All	Completely Slightly Not at All	Completely Slightly Not at All
<b>3. Brown Marker</b>	Completely Slightly Not at All	Completely Slightly Not at All	Completely Slightly Not at All
<b>4. Ketchup</b>	Completely Slightly Not at All	Completely Slightly Not at All	Completely Slightly Not at All
<b>5. Finger Nail Polish</b>	Completely Slightly Not at All	Completely Slightly Not at All	Completely Slightly Not at All

<b>6. Grease</b>	Completely Slightly Not at All	Completely Slightly Not at All	Completely Slightly Not at All
<b>7. Coffee</b>	Completely Slightly Not at All	Completely Slightly Not at All	Completely Slightly Not at All
<b>8. Grass</b>	Completely Slightly Not at All	Completely Slightly Not at All	Completely Slightly Not at All
<b>9. Dirt</b>	Completely Slightly Not at All	Completely Slightly Not at All	Completely Slightly Not at All

<b>Fabric #:</b>	<b>#4</b>	<b>#5</b>	<b>#6</b>
<b>Specific Test:</b>			
<b>1. Mustard</b>	Completely Slightly Not at All	Completely Slightly Not at All	Completely Slightly Not at All
<b>2. Lipstick</b>	Completely Slightly Not at All	Completely Slightly Not at All	Completely Slightly Not at All
<b>3. Brown Marker</b>	Completely Slightly Not at All	Completely Slightly Not at All	Completely Slightly Not at All
<b>4. Ketchup</b>	Completely Slightly Not at All	Completely Slightly Not at All	Completely Slightly Not at All
<b>5. Finger Nail Polish</b>	Completely Slightly Not at All	Completely Slightly Not at All	Completely Slightly Not at All
<b>6. Grease</b>	Completely Slightly Not at All	Completely Slightly Not at All	Completely Slightly Not at All
<b>7. Coffee</b>	Completely Slightly Not at All	Completely Slightly Not at All	Completely Slightly Not at All
<b>8. Grass</b>	Completely Slightly Not at All	Completely Slightly Not at All	Completely Slightly Not at All
<b>9. Dirt</b>	Completely Slightly Not at All	Completely Slightly Not at All	Completely Slightly Not at All

<b>Fabric #:</b>	<b>#7</b>	<b>#8</b>
<b>Specific Test:</b>		
<b>1. Mustard</b>	Completely Slightly Not at All	Completely Slightly Not at All
<b>2. Lipstick</b>	Completely Slightly Not at All	Completely Slightly Not at All
<b>3. Brown Marker</b>	Completely Slightly Not at All	Completely Slightly Not at All
<b>4. Ketchup</b>	Completely Slightly Not at All	Completely Slightly Not at All
<b>5. Finger Nail Polish</b>	Completely Slightly Not at All	Completely Slightly Not at All
<b>6. Grease</b>	Completely Slightly Not at All	Completely Slightly Not at All
<b>7. Coffee</b>	Completely Slightly Not at All	Completely Slightly Not at All
<b>8. Grass</b>	Completely Slightly Not at All	Completely Slightly Not at All
<b>9. Dirt</b>	Completely Slightly Not at All	Completely Slightly Not at All

Write up the results of your specific types of tests below. Tell me which removed stains the best and which option would you recommend for washing cotton t-shirts in the future.

Example Below.

<b>Fabric #:</b>	<b>#1</b>	<b>#2</b>	<b>#3</b>
<b>Specific type of test:</b>			
<b>Results:</b>			

*Recommendations:*